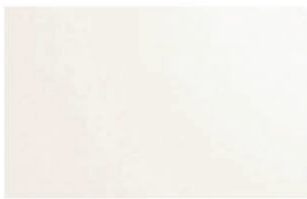




TATA STEEL

Colorcoat® LG

Pre-finished steel for roof and wall cladding



White **CD1** 00E55



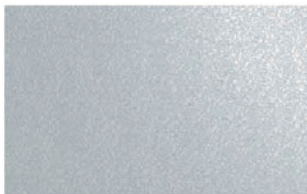
Goosewing Grey **CD1** 10A05



Meadowland **CD1** 12B17



Hamlet **CD1** RAL 9002



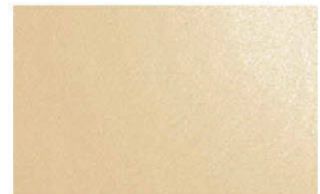
Albatross **CD1** 18B17



Merlin Grey **CD1** 18B25



Moorland Green **CD1** 12B21



Honesty **CD1** 10C31



Wedgewood Blue **CD1** 18C37



Raven **CD2** 18B29



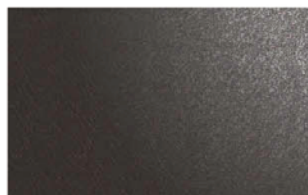
Heritage Green **CD2** RAL 6002



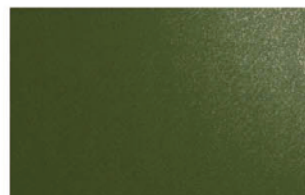
Mushroom **CD1** 10B19



Ocean Blue **CD2** 18C39



Anthracite **CD1** RAL 7016



Olive Green **CD1** 12B27



Terracotta **CD2** 04C39



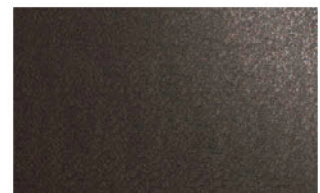
Sargasso **CD2** RAL 5003



Black **CD1** 00E53



Juniper Green **CD2** 12B29



Vandyke Brown **CD2** 08B29

Notes

1. The standard colour references shown above are the nearest equivalents.
2. The printed colours shown for Colorcoat® LG are for guidance only. For a true representation of colour and effect, please obtain product samples from the Colorcoat Connection® helpline.
3. If an exact match between components and Colorcoat® LG is essential, this is best achieved by matching to the actual cladding delivered to site.

Colorcoat® LG

Available from Tata Steel, Colorcoat® LG is a leathergrain embossed plastisol product suitable for roof and wall cladding systems where good performance is required at a competitive price.

- 200µm durable, abrasion-resistant topcoat.
- Available in the most popular colours in standard sizes.
- Galvanised substrate to BS EN 10346:2015 offering good corrosion resistance.
- Available with a performance guarantee up to 25 years including factory cut edges.
- High performance reverse side backing coat as standard.
- Manufactured in the UK by Tata Steel, who have a proven track record in pre-finished steel.
- Fully REACH compliant and free of chromates.

Colorcoat® reassurance

The Colorcoat® brand provides the recognised mark of quality and expertise from Tata Steel. Encompassing over 50 years of innovation, strict testing procedures and manufacturing excellence, Colorcoat® provides a range of pre-finished steel products which have been used on countless projects worldwide.

Product performance

Colorcoat® LG is carefully manufactured in a controlled process to ensure consistent quality.

Product testing

To ensure the integrity of Colorcoat® products, Tata Steel uses laboratory tests to measure their performance against corrosion, effect of sunlight, chemicals and abrasion. All testing of products is carried out in specialised laboratories to international standards.

Guarantee periods

Colorcoat® LG comes with an external performance guarantee of up to 25 years, including factory cut edges. This is made available through the cladding system manufacturer or distributor.

Tata Steel

Shotton Works, Deeside,
Flintshire, CH5 2NH.
United Kingdom
T: +44 (0) 1244 812345

Colorcoat Connection® helpline

T: +44 (0) 1244 892434
E: colorcoat.connection@tatasteel.com

Tata Steel UK Limited is registered in England under number 2280000 with registered office at 18 Grosvenor Place, London, SW1X 7HS.

Colorcoat® LG guarantee cover

| Colour Band | Inland | | Coastal | |
|-------------|----------|----------|----------|----------|
| | Walls | Roofs | Walls | Roofs |
| CD1 | 25 years | 25 years | 20 years | 20 years |
| CD2 | 20 years | 15 years | 15 years | 10 years |

Notes

1. Guarantee periods quoted are applicable to UK and Ireland only and exclude individual domestic residential applications.
2. Figures under coastal heading are buildings within 2km of the sea.
3. Full terms and conditions of the Colorcoat® LG guarantee are on the reverse of the guarantee application form available from Colorcoat® supply chain partners.

Typical properties

| Colorcoat® LG | Test standard | | |
|---|---------------|--|--------------------------------|
| Nominal organic coating thickness | (µm) | 200 | EN 13523-1 |
| Gloss (60°) | (%) | 15-35 | EN 13523-2 |
| Scratch resistance | (g) | > 3500 | EN 13523-12 |
| Abrasion resistance (Taber, 250 rev, 1 kg) | (mg) | < 12 | EN 13523-16 |
| Flexibility: Reverse impact | (J) | ≥ 18 | EN 13523-5 |
| Adhesion (cross hatch) | (%) | 100 Pass | EN 13523-6 |
| Minimum bend radius | (T) | 0 T@16°C | EN 13523-7 |
| Corrosion resistance: Salt spray Humidity | (h) (h) | 1000 1000 | EN 13523-8 EN 13523-25 |
| Max. continuous operating temp. | (°C) | 60 | Tata Steel |
| Reaction to fire | | Class C-s2,d0* | EN 13501-1 |
| Fire performance of roof coverings | | B _{ROOF(T4)} ** CWFT B _{ROOF(T1,2,3)} *** | EN 13501-5 CWFT 2005/403/EC |

General notes

The figures contained in this table are typical properties for solid colours and do not constitute a specification. These figures relate to the topcoat. For details of test methods see www.colorcoat-online.com

* Valid for all gauges ≥0.46mm and all colours on the colourcard for single sided product.

** Valid for all gauges ≥0.4mm and all colours for all single and double sided products.

*** Valid for all gauges ≥0.4mm and all colours for single sided and 200/100 option.

www.colorcoat-online.com

Trademarks of Tata Steel UK Limited

Albatross, Colorcoat, Colorcoat Connection, Colorcoat HPS200 Ultra, Confidex, Hamlet, Heritage Green, Honesty, Meadowland and Sargasso are registered trademarks of Tata Steel UK Limited.

While care has been taken to ensure that the information contained in this publication is accurate, neither Tata Steel, nor its subsidiaries, accept responsibility or liability for errors or for information which is found to be misleading.

Before using products or services supplied or manufactured by Tata Steel and its subsidiaries, customers should satisfy themselves as to their suitability.



Scan for the latest version of this literature.

Copyright 2022 Tata Steel UK Limited
Language English UK 1222

Colorcoat® PE 15 Benchmark for internal liner sheets

Colorcoat® PE 15 is the benchmark for internal sheets, most commonly supplied in white to ensure light reflectivity in the internal environment and reduce lighting costs.

- 15µm polyester coating for internal applications.
- Galvanised substrate with Zinc or MagiZinc® metallic coating offering very good corrosion resistance.
- Available in popular colours including RAL 9002, 9003, 9010 and 7035 to ensure light reflectivity in the internal environment.
- High-performance reverse side backing coat specially formulated for use in construction applications, providing good foam adhesion to standard systems.
- Provides an efficient and durable interior product that should last the life of buildings in normal, dry, controlled and unpolluted environments.

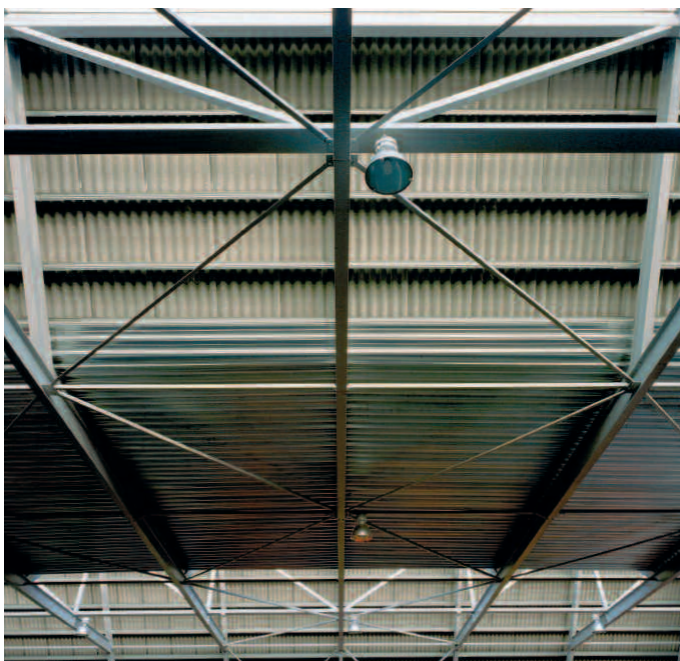
Colorcoat® reassurance

The Colorcoat® brand provides the recognised mark of quality and expertise from Tata Steel. Encompassing over fifty years of innovation, strict testing procedures and manufacturing excellence, Colorcoat® provides a range of pre-finished steel products which have been used on countless projects worldwide.

Tailored solutions

For any customised requirements, MyriaPlus® can meet your needs with shorter lead times, flexible quantities and further processing.

For further information, please contact Tata Steel.



Colorcoat® PE 15

Product performance

Colorcoat® PE 15 is carefully manufactured in a controlled process to ensure consistent quality and is suitable for interior roof and wall liner trays, cassette systems and sandwich panels in dry and unpolluted environments.

Colorcoat® PE 15 is not suitable for external applications and to ensure it is fitted in the optimum condition, outdoor storage should be minimised during the construction process.

Colorcoat® PE 15 can be expected to last the life of the building in normal controlled and unpolluted environments.

Tata Steel has a range of Colorcoat® products suitable for different environments and applications.

Product testing

To ensure the integrity of Colorcoat® products, Tata Steel uses laboratory tests to measure their performance against corrosion, effect of sunlight, chemicals and abrasion. All testing of products is carried out in specialised laboratories to international standards.

Typical properties

| Colorcoat® PE 15 | | | Test standard |
|-------------------------------------|-------|---------|---------------|
| Nominal organic coating thickness | µm | 15 | EN 13523 - 1 |
| Specular gloss (60°) | % | 30 - 50 | EN 13523 - 2 |
| Flexibility: Minimum bend radius | T | 5T | EN 13523 - 7 |
| Adhesion | T | ≤ 2T | EN 13523 - 7 |
| Corrosion resistance: Humidity | hours | 500 | EN 13523 - 26 |
| Reaction to fire classification* | | A1 | EN 13501 - 1 |
| Internal environment classification | | CPI2 | EN 10169 |

General notes

1. The figures contained in this table are typical properties and do not constitute a specification. These figures relate to the topcoat and solid colours. For details on test methods see www.colorcoat-online.com

* Fire classification is subject to gauge. Double sided option is not tested and quoted fire classification may therefore not be applicable. Please contact Tata Steel for further information.

Contact details

www.colorcoat-online.com

Trademarks of Tata Steel UK Limited

Colorcoat, MagiZinc and MyriaPlus are trademarks of Tata Steel UK Limited.

Care has been taken to ensure that the contents of this publication are accurate, but Tata Steel Europe Limited and its subsidiaries, (including Tata Steel UK Limited), do not accept responsibility or liability for errors or information that is found to be misleading. Suggestions for, or descriptions of, the end use or application of products or methods of working are for information only and Tata Steel Europe Limited and its subsidiaries accept no liability in respect thereof.

Before using products or services supplied or manufactured by Tata Steel Europe Limited and its subsidiaries, customers should satisfy themselves as to their suitability.